

StaebeL Self Help Pole User Manual

Product Code: 7-ASHP-EN7



Thank you for choosing the Staebel Self Help Pole. Please carefully read these instructions before using the accessory. This instruction manual contains information on the instructions for use on operating this accessory.

These instructions for use may contain inaccuracies or printing errors. The information provided here will be updated periodically and changes due to product maintenance will be included in later editions. Changes or improvements are possible at any time without prior notice. If you have any questions, please contact our customer service team.

The instructions for use must be read and used by every person who operates this accessory.

PURPOSE

The intended purpose is to be used for individuals requiring support for mobilisation, repositioning and transfer requirements. Users must be instructed on its correct use and familiarise themselves with these instructions. Common users include any individual who has a disability or a health condition who require support.

PRE-OPERATION CHECK

With the self help pole in position, check the following:

- Make sure this product doesn't interfere with moving bed parts.
- When fitting self help pole to this bed please beware of the possible crushing points.

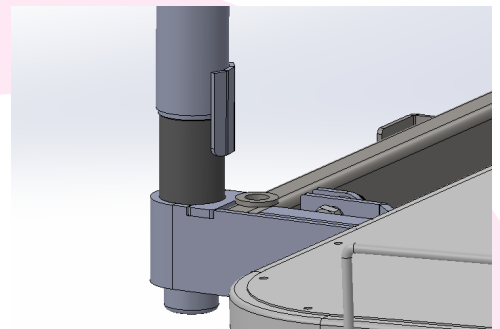
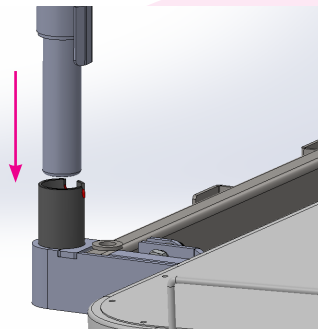
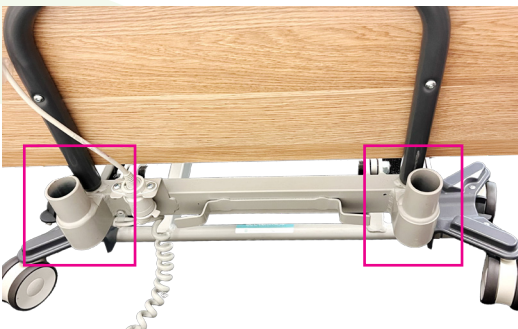
Important:

Warning: The word Warning refers to a hazard to unsafe practice that may cause severe injury or death to you or another person. Accident risk Warning: Do not use or allow use where the intended user has;

- Cognitive impairment
- History of recurrent falls
- Uses medication that would compromise falls
- Limited mobility comprises safe use

Designed to be fitted to the Staebel EN7 Floorline Bed, Alrick Luxa Homecare Bed and Horizon Acute Floorline Bed. Failure to comply may result in warranty being void.

FITTING THE SELF HELP POLE



1. Drops the Self Help Pole into the socket at headend. There is a shoulder to stop the Pole dropping through. It can be attached to either side.

2. Test Self Help Pole before use. To remove, just lift the self help up.

